

12/7/23 Nevada Children's Behavioral Health Consortium

PRESENTER:

Lisa Mariani
Magellan of Nevada
Chief Executive Officer

Magellan
HEALTHCARE®

Agenda

» **Magellan Health**
– company and
children’s
services overview

» **Nevada’s new
Care Management
Entity (CME)** –
enhancing BH
services for the
most vulnerable
children

» **High Fidelity
Wraparound (HFW)
implementation
timeline** – working
with you, step by step,
on statewide rollout



Leading humanity
to healthy,
vibrant lives



Evidence-based innovations for
emotional wellbeing and mental health

- ✓ 50+ years in behavioral health
- ✓ 20+ years specialized children's programs experience
- ✓ 19.5M behavioral lives
- ✓ 1K+ employer contracts
- ✓ 110,000+ providers (in-person, telehealth)



Improving the lives
of those that serve

- ✓ 1.5M federal lives
- ✓ 140+ year legacy of service
- ✓ 250+ worldwide locations
- ✓ 33% military-connected workforce
- ✓ 2,600 employees

Children's services overview



In partnership with state, county and other governmental agencies across the country, Magellan manages innovative programs that serve the broad spectrum of BH needs for more than 500,000 children.

Louisiana

- ✓ 93% of young people are able to remain in their homes
- ✓ 74% improvement in youth clinical functioning

Wyoming

- ✓ 95% of youth served remain in their homes
- ✓ 75% savings to care for youth in the program vs. inpatient care
- ✓ 4.8 out of 5 overall program satisfaction

Virginia

- ✓ Family support coordinators have helped decrease residential stays by an average of 61 days per child.

Pennsylvania

- ✓ 91.7% decrease in crisis services utilization
- ✓ 63% decrease in inpatient admissions

Florida

- ✓ Magellan helped 46% of children living in vulnerable situations receive a non-residential level of care recommendation, which safeguarded dependent children from unnecessary restrictive levels of care.





Nevada's new Care Management Entity (CME)

Connect Nevada: Strengthening Youth,
Empowering Families

Magellan awarded Nevada program



The new contract will enhance and expand access to community-based services and supports for children and youth, and their families, with complex BH needs who are at risk for out-of-home placement.

The Nevada Division of Children and Family Services CME will build on the state's successes in implementing a system of care for this population.

Through the CME, Magellan will coordinate with providers, organizations across the state, and youth and families to provide services based on assessed need, regardless of insurance type.

Children and youth with no health insurance may also receive services.

Who we will serve

The new CME will provide or coordinate services for children and youth, aged 3 through 20, who have behavioral health needs and are:

Medicaid enrolled/eligible or under-/un-insured and:

- At risk of out-of-home placement or
- Placed in a residential treatment facility or inpatient setting or
- Involved in multiple child serving systems

At risk of custody relinquishment in a state agency or institution

Services we will provide

Through a youth guided and family driven, strengths-based approach that is coordinated across child-serving agencies and providers, we will provide access to:

High Fidelity Wraparound and other care coordination services

Home- and community-based treatment

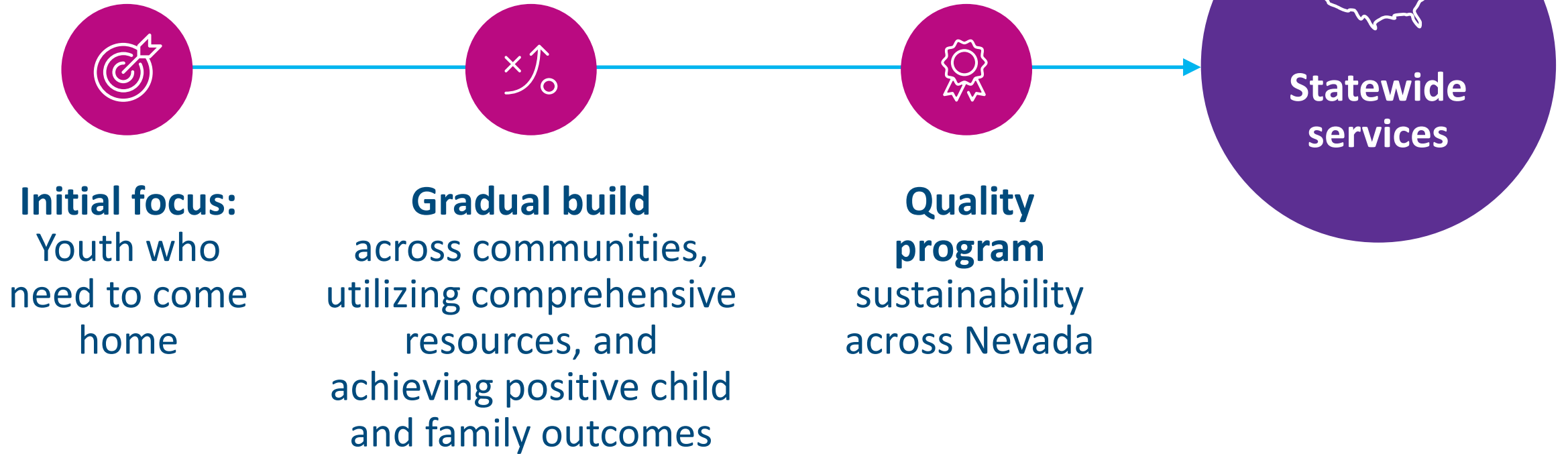
Emergency and planned respite

Family and youth peer support

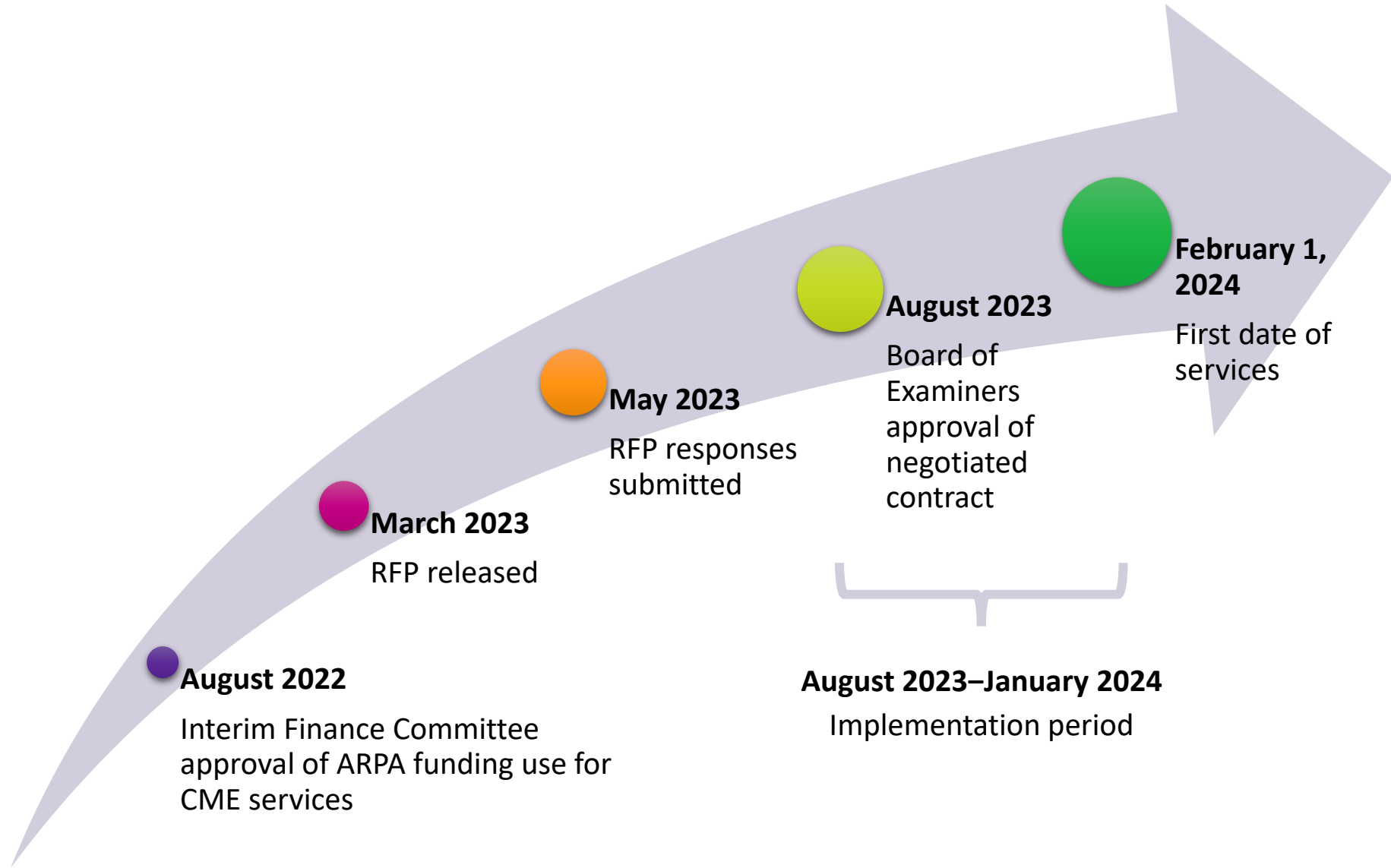
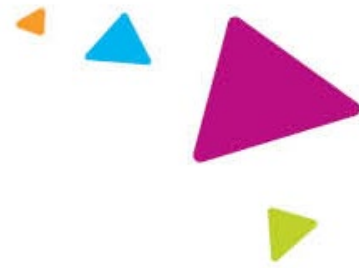
High Fidelity Wraparound (HFW) implementation timeline



General implementation timeline



Full program implementation timeline



How we will implement the culturally relevant principles of HFW

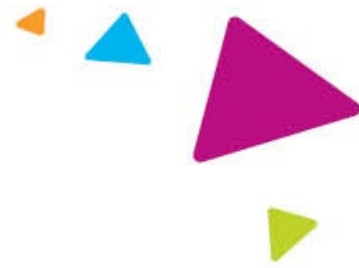
✓ In partnership with the state and WIN program:

- **Magellan will provide HFW services**
- **Magellan will contract with individuals and provider agencies that can or will offer:**
 - Home and community-based therapies
 - Family peer support through Nevada PEP
 - Youth peer support
 - Respite (planned and emergency)

✓ Magellan will partner with as many interested child-serving parties as possible:

- **Agencies**
- **Community service entities**
- **School programs**
- **Tribes**
- **Other community members invested in supporting children and families**

✓ Formal relationships with MCOs and other payors to coordinate care across systems



Magellan HEALTHCARE.

Portal Access: Member Provider | Contact

Find a Provider | About | For Health Plans | For Employers | For States | For Federal/DOD

Home /

Welcome to Magellan of Nevada

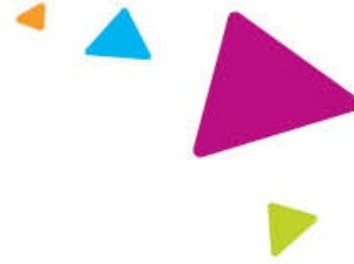
Magellan Healthcare is pleased to work with the Nevada Department of Health and Human Services – Division of Child and Family Services, and providers and organizations across the state, to provide a comprehensive and coordinated approach to care and support for children and youth, ages 3-20, with complex behavioral health needs who are at risk for placement outside of their homes or communities. The program will coordinate and provide access to Intensive Care Coordination using High Fidelity Wraparound, Intensive Home-Based Treatment, emergency and planned respite, as well as youth peer support based on a robust strengths-based assessment of need with a focus on family and youth voice.

Crisis contact information

- Call or text **988** if you are experiencing a mental health, substance use or suicidal crisis.
- Call **911** if you are experiencing a medical emergency.



Confidentiality statement



By receipt of this presentation, each recipient agrees that the information contained herein will be kept confidential and that the information will not be photocopied, reproduced, or distributed to or disclosed to others at any time without the prior written consent of Magellan Health, Inc., a subsidiary of Centene Corporation.

The information contained in this presentation is intended for educational purposes only and is not intended to define a standard of care or exclusive course of treatment, nor be a substitute for treatment.